



e-ISSN: 2319-8753 | p-ISSN: 2347-6710

IJRSET

International Journal of Innovative Research in
SCIENCE | ENGINEERING | TECHNOLOGY



INTERNATIONAL JOURNAL OF INNOVATIVE RESEARCH

IN SCIENCE | ENGINEERING | TECHNOLOGY

Volume 12, Issue 5, May 2023

ISSN INTERNATIONAL
STANDARD
SERIAL
NUMBER
INDIA

Impact Factor: 8.423

 9940 572 462

 6381 907 438

 ijrset@gmail.com

 www.ijrset.com

Block Chain Scada Quality Control for in Industrial Automation

Shil Sudhir Paunikar¹, Dr. Anil Vanalkar²

P.G Student, Department Of Mechanical Engineering, Rashtrasant Tukdoji Maharaj Nagpur University, India¹

Professor, Department of Mechanical Engineering, Rashtrasant Tukdoji Maharaj Nagpur University, India²

ABSTRACT: Scada systems are highly distributed systems used to control geographically dispersed assets, often scattered over thousands of square kilometers, where centralized data acquisition and control are critical to system operation. They are used in distribution systems such as water distribution and waste water collection systems, oil and gas pipelines, electrical power grids, and railway transportation systems. A scada control center performs centralized monitoring and control for field sites over long- distance communications networks, including monitoring alarms and processing status data. Based on information received from remote stations, automated or operator-driven supervisory commands can be pushed to remote station control devices, which are often referred to as field devices. Field devices control local operations such as opening and closing valves and breakers, collecting data from sensor systems, and monitoring the local environment for alarm conditions. In general, the error rate of 1-1.5 percent found in manual working can be brought down to 0.00001 percent with automation. As stakeholders have begun to increasingly demand certain quality standards, automation has also become a key part of today's manufacturing setup." automation is the key in all types of manufacturing, especially in the face of an emerging global economy. From being used to increase productivity and reduce cost, automation has now become vital to increasing product quality. Further, in certain fields like semiconductor chip manufacturing where miniaturization is the key, machines are capable of achieving greater precision and speed than humans-after all.

KEYWORDS: Scada systems, supervisory, automated, communications networks, productivity.

I. INTRODUCTION

Automation is an ancient Greek word that means "self-dictated". In modern day terminology, it means quite the same, and in the context of industries, it refers to a complex set up of machines, motors and drives, information, computers and software that are capable of functioning autonomously, without human intervention, under normal circumstances. What is important to note is that the aim of automation is not to eliminate workers on the shop floor-every automation scientist worth her salt will admit that no machine can ever beat a human's senses and institution's why automate? The primary motive of automation is to tap the predictability and dependability of machine to do something and it will do it in exactly the same way even after the millionth iteration. Therefore the basic goals of automation are to achieve precision and uniformity, eliminate errors and improve the whole process. In general, the error rate of 1-1.5 percent found in manual working can be brought down to 0.00001 percent with automation. As stakeholders have begun to increasingly demand certain quality standards, automation has also become a key part of today's manufacturing setup." automation is the key in all types of manufacturing, especially in the face of an emerging global economy. From being used to increase productivity and reduce cost, automation has now become vital to increasing product quality. Further, in certain fields like semiconductor chip manufacturing where miniaturization is the key, machines are capable of achieving greater precision and speed than humans-after all, We cannot expect men with magnifying glasses to sit and assemble the integrated circuit in innumerable chips manufactured every day. Automation is indispensable in such cases. It is also vital to recognize the influence of the increasingly dynamic nature of supply chains today, on automation. The manufacturing process has to flex in an ad hoc fashion depending on various factors ranging from fluctuations in the market demand to customized bulk orders from clients. Supply chain management software, enterprise resource management software and so on automatically sync with the control mechanism, to tweak the manufacturing process as required right from the quantity of production to the configuration of parts. Sometimes, the production line itself is changed as required. It is as easy as few button taps today. In a do-or-die market, such flexibility is crucial, and has been one of the key reasons boosting the role of industrial automation. Automation is also



believed to be energy-efficient, as the operation of machine is optimized. Apart from the smooth rhythm, which in itself conserves power, automation also provides the control needed to put machine on or off in a just-in-time. Automation is also crucial in hazardous areas that humans would not dare to such as oil refineries, manufacturing of certain hazardous chemicals, metal working and welding, and nuclear reactors. Automation machines, controlled through wireless networks, are more effective in such area than a scared human worker. More so, in the US and other developed countries, some companies, though not motivated by any of the preceding reasons, have also been forced to go in for automation-for want of semi-skilled worker As the technology advances there is an increasing need for improvement in the existing technology. So as we found out there are some areas where we can provide a single unit control which will be most beneficial for providing an efficient working in the industry. As the industry performing the manual work function so we are trying to provide a single unit control to drive the multiple application under the regulated control format so a single person can handle many *applications at a t me with more easy and comfortably. With the advent of modern technology, the human brain is working day by day to develop complex and more technology specific products which have multifarious applications in the different aspects of work field.

II. RESEARCH METHODOLOGY

Automation is additionally believed to be energy-efficient, because the operation of machine is optimized. aside from the smooth rhythm, which in itself conserves power, automation also provides the control needed to place machine on or off in a just-in-time fashion, as required, so there's no redundancy. Automation is additionally crucial in hazardous areas that humans would not dare to such as oil refineries, manufacturing of certain hazardous chemicals, metal working and welding, and nuclear reactors. Automation machines, controlled through wireless networks, are simpler in such area than a scared human worker. More so, within the US and other developed countries, some companies, though not motivated by any of the preceding reasons, have also been forced to travel in for automation-for want of semi-skilled worker. The necessity for existing technology to be improved is growing as technology develops.

So as we discovered there are some areas where we can provide a single unit control which will be most beneficial for providing an efficient working in the industry. We are trying to give a single unit control to drive many applications under the regulated control format since the industry performs manual job functions so a single person can handle many *applications at a t me with more easy and comfortably With the advent of modern technology, the human brain is functioning day by day to create increasingly sophisticated, technologically focused products with a good range of applications in the various fields of employment.

The goal of this project is to make a product that can be used in a variety of professional and commercial settings. "Designing of a controlled system" using a PC might be used as an introduction to the current project. The PC controlled system gives us the power to control big organization's electrical system under a single administrator which saves the valuable electrical power and provides us to have the control of any electrical devices It consists of a panel which is attached to various electrical devices from which a single person can handle all systems from one position. These operations are controlled by interfacing it using buses with a private computer. All operations are controlled through keyboard inputs of a PC. of these executions are made possible with the help of a most powerful programming language the ' language. The software is comprised of language programs when executed give the specified physical results hence all operations can be easily managed with the PC.

III. METHODOLOGY

A food conveyer belt is a moving strip of material that transports food form one location to another; these are frequently found in food processing facilities. Pre-processed food is transported by industrial conveyer belt systems to processing and sanitation facilities, and post-processed food is transported to packing stations. Since this belt transports food, most nations and regions have cleanliness laws in situ to protect consumers' safety and prevent food from spoiling while being transported. Food products are typically considerably smaller than other things conveyed by a conveyer belt , hence the belt itself is usually not as wide as other conveyor belts. A food conveyer belt is employed even tough processing plants normally use this one. A food

conveyer belt is frequently utilized in Japanese restaurants to spin sushi plates to every table even though it is generally used in processing industries. the foremost typical location for a conveyer belt for food is inside a food processing facility, where products like meat and vegetables are processed before being sold to consumers. the method of loading food products begins with loading them onto a conveyer belt, which usually features little bays to help hold the items. for instance , a conveyer belt transports food to sanitation facilities for cleaning before transferring Processes.

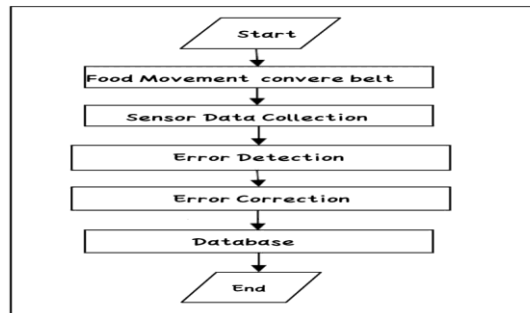


Fig. 1 System flow

The conveyer belt is used to transport the commodities to packing stations or personnel once processing is finished so that they can be packaged and delivered to shops. The use of sensors technology improves food quality, safety, production, and profitability in food processing sectors by assisting in the detection and identification of pollutants during the manufacturing processes. The proposed model is a replacement of the conventional centralized control architecture, where local processing is performed rather than having a central control unit.

IV. EXPERIMENTAL RESULTS

A is a facility with instruments and equipment to make observations of atmospheric conditions in order to provide information to make process of manufacturing with good quality. The measurements taken include temperature, humidity, speed , and precipitation mounts. measurements are taken as free of other obstructions as possible, while temperature and humidity measurements are kept or isolation. Manual observations are taken at least once daily, while automated observations are taken at least once an hour.

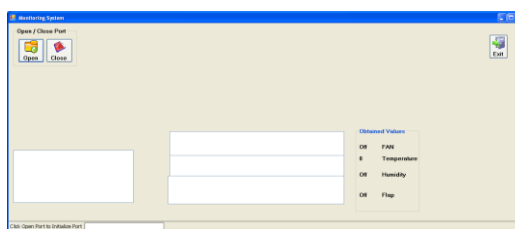


Fig. 2. System output

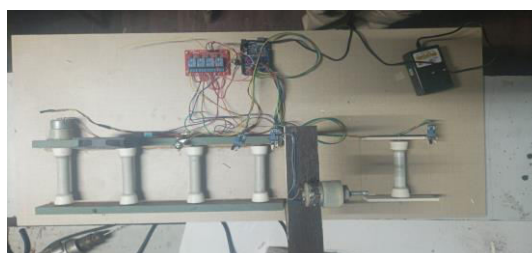


Fig 3. System Model



|| Volume 12, Issue 5, May 2023 ||

| DOI:10.15680/IJIRSET.2023.1205118 |

To provide a consistent object-oriented programming environment whether object codes is stored and executed locally on Internet-distributed, or executed remotely. To provide a code-execution environment to minimizes software deployment and guarantees safe execution of code. Eliminates the performance problems.

V. CONCLUSION

Alarms play a big role in the majority of SCADA deployments. A digital status point with the values NORMAL or ALARM is an alarm. it's possible to design alarms so that they will go off when certain conditions are satisfied. The "fuel tank empty" light on an automobile is an illustration of an alarm. The alarm alerts the SCADA operator to the system component that needs care. When an alarm is activated, emails and text messages are frequently sent also , alerting management also as the SCADA operator.

REFERENCES

- [1] President's National Security Telecommunications Advisory Committee, Information Assurance Task Force, Electric Power Information Assurance RiskAssessment, March 1997. Department of Energy
- [2] Newton-Evans Research Company, Worldwide Market Survey of SCADA, Energy Management Systems and Distribution Management Systems in Electrical Utilities: 2003-2005, Volume 1, North American Market, June 2003.
- [3] Paul Oman, Edmund O. Schweitzer III, Deborah Frincke, "Concerns about Intrusions into Remotely Accessible Substation Controllers and SCADA Systems," 27 th Annual Protective Relay Conference, Paper #4, 2000: <http://www.selinc.com>
- [4] Glass, Brett, "Biometric Security," PC Magazine, January 20, 2004. Computer Security Institute/Federal Bureau of Investigation, 2003 Computer Crime and Security Survey, 2003
- [5] IEEE 1588-2008 Standard for Precision Clock Synchronization Protocol for Networked Measurement and Control Systems.
- [6] Common Industrial Protocol (CIP) Volume I Edition 3.4 July 2008, ODVA. Available <http://www.odva.org>
- [7] A. K. Palit and D. Popovic. "Computacional Intelligence in Time Series Forecasting Theory and Engineering Applications", Springer, 2005.
- [8] L. Fillatre, D. Marakov y S. Vaton, "Forecasting seasonal traffic flows, Computer Science Department", ENST Bretagne, Brest, Paris, 2003
- [9] S.H. Kellert, "In the wake of chaos: Unpredictable order in dynamical systems", The University of Chicago Press, 1993.
- [10] J.S.R. Jang and C.T. Sun, "Predicting chaotic time series with fuzzy if-then rules", IEEE International Conference Fuzzy System., 1993.



SJIF Scientific Journal Impact Factor

Impact Factor: 8.423



INTERNATIONAL JOURNAL OF INNOVATIVE RESEARCH

IN SCIENCE | ENGINEERING | TECHNOLOGY

 9940 572 462  6381 907 438  ijirset@gmail.com



www.ijirset.com

Scan to save the contact details